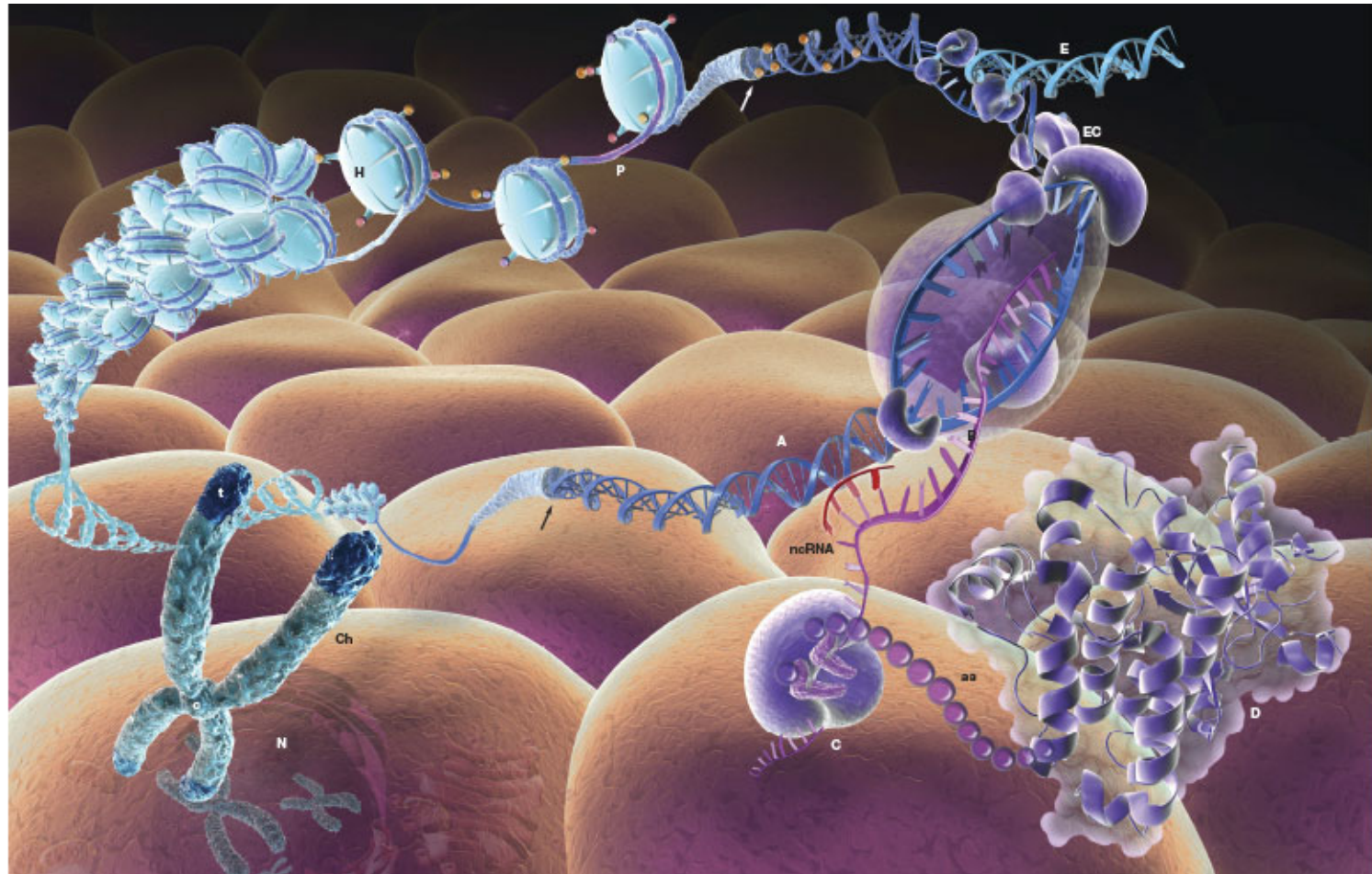
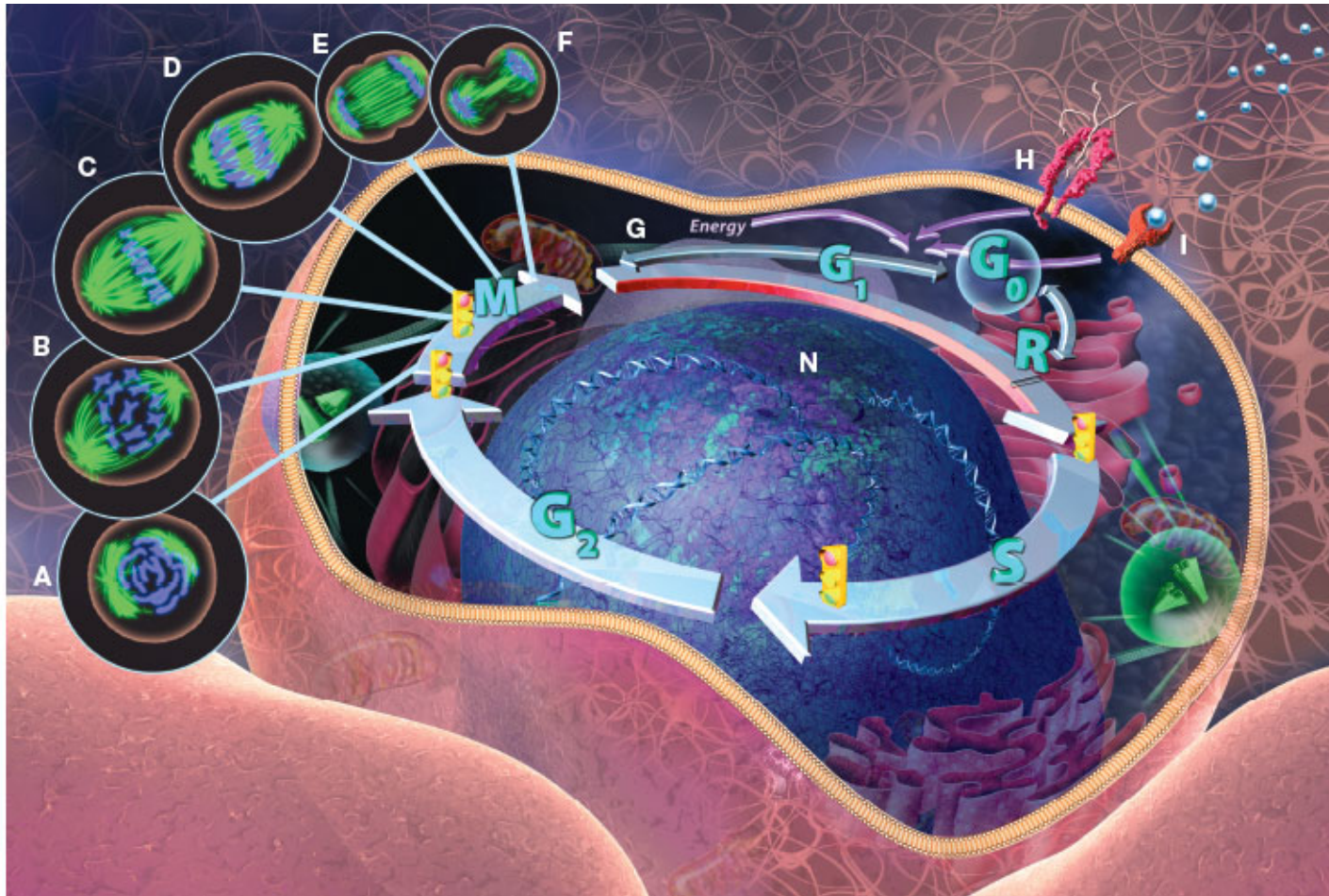


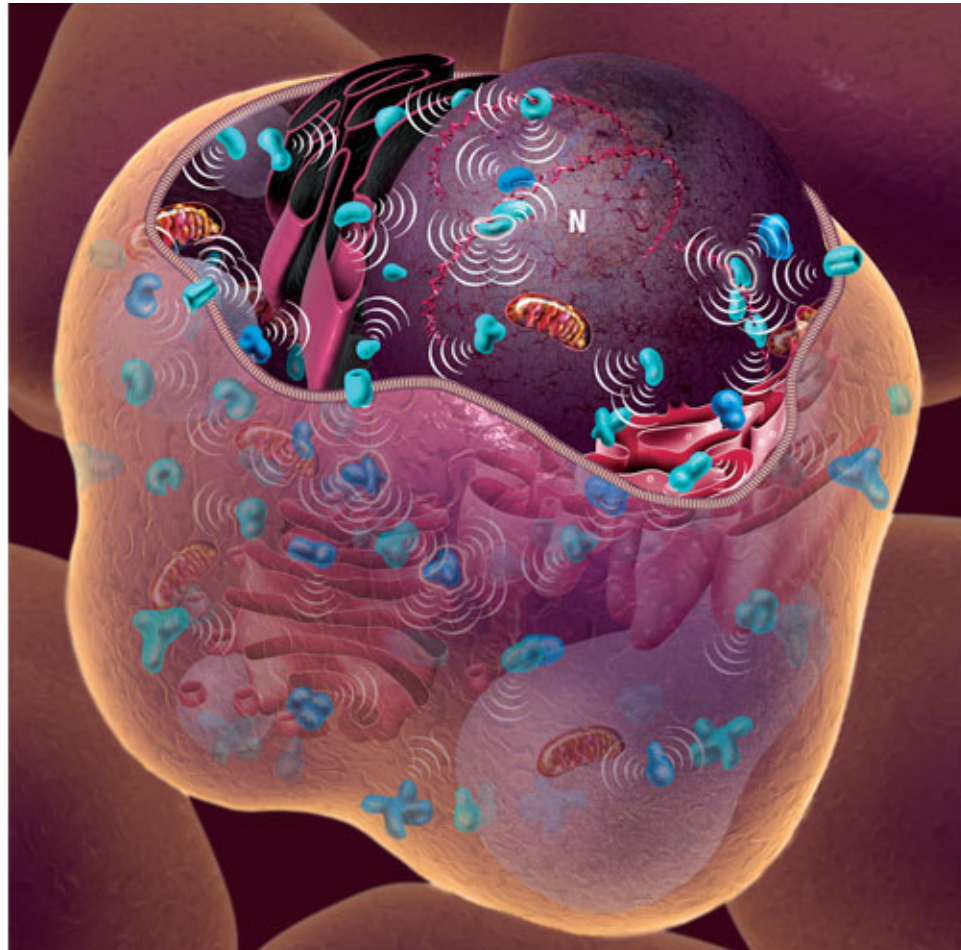
The Basis of Genetics



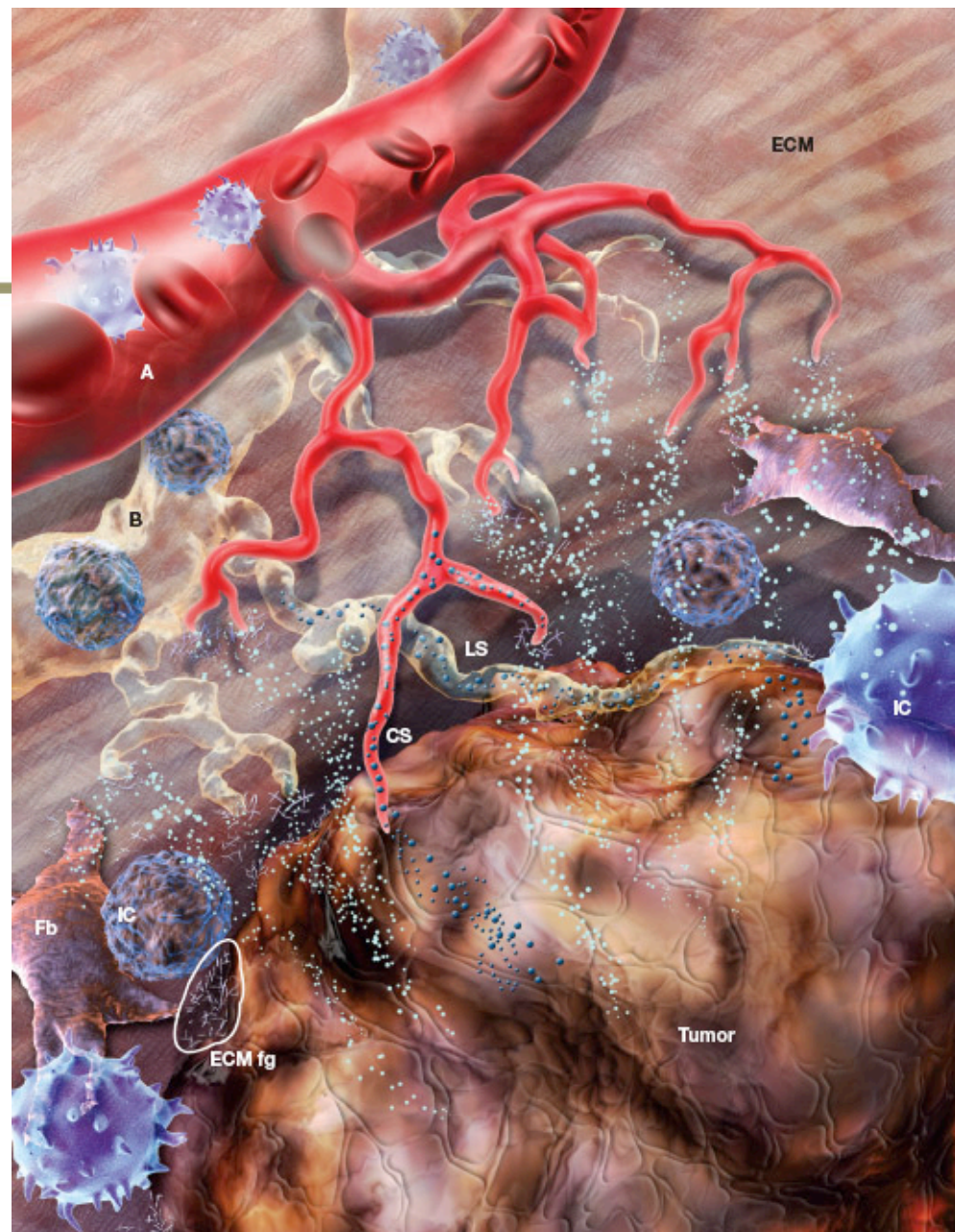
The Cell Cycle



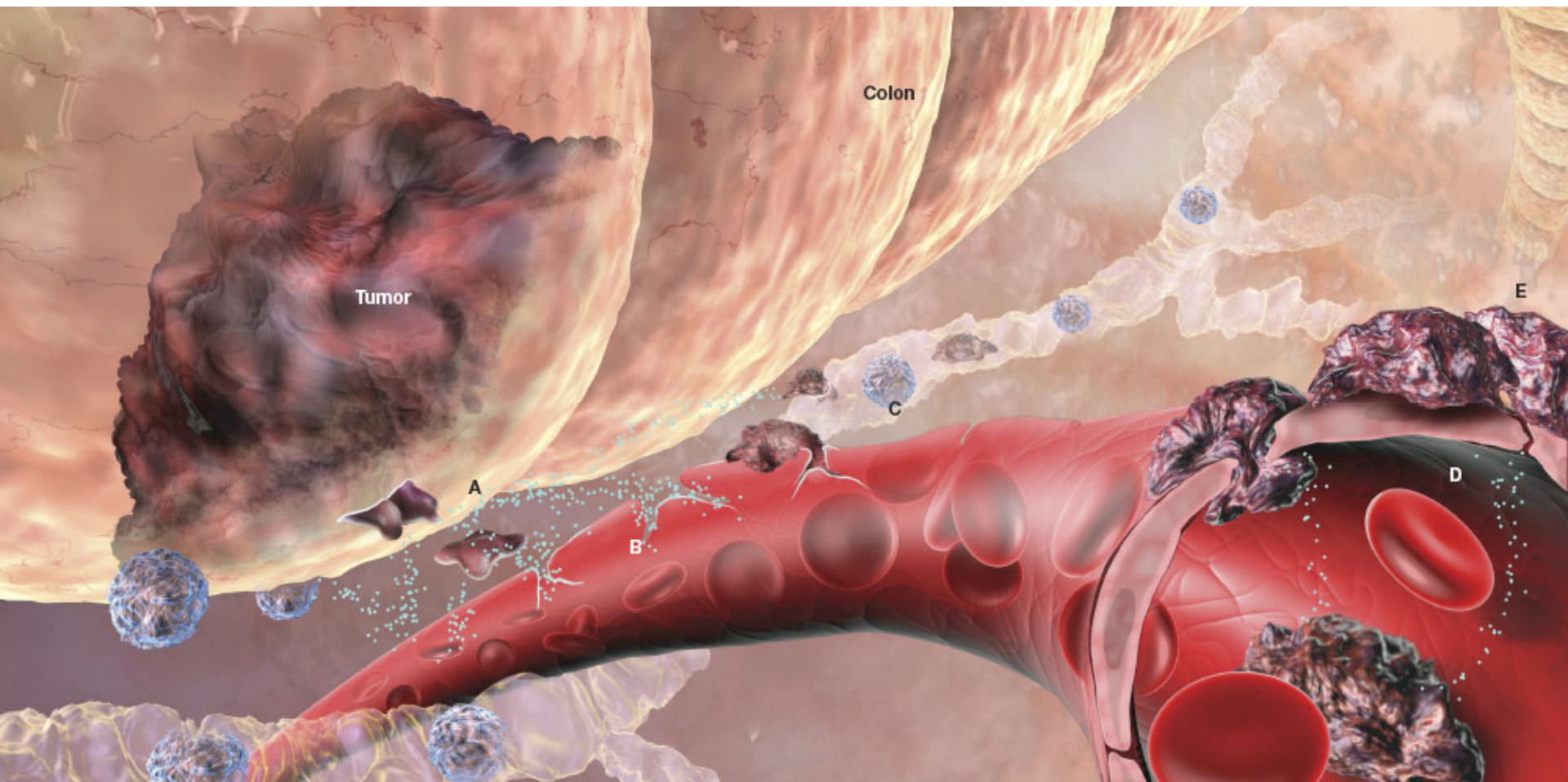
Cell Signaling



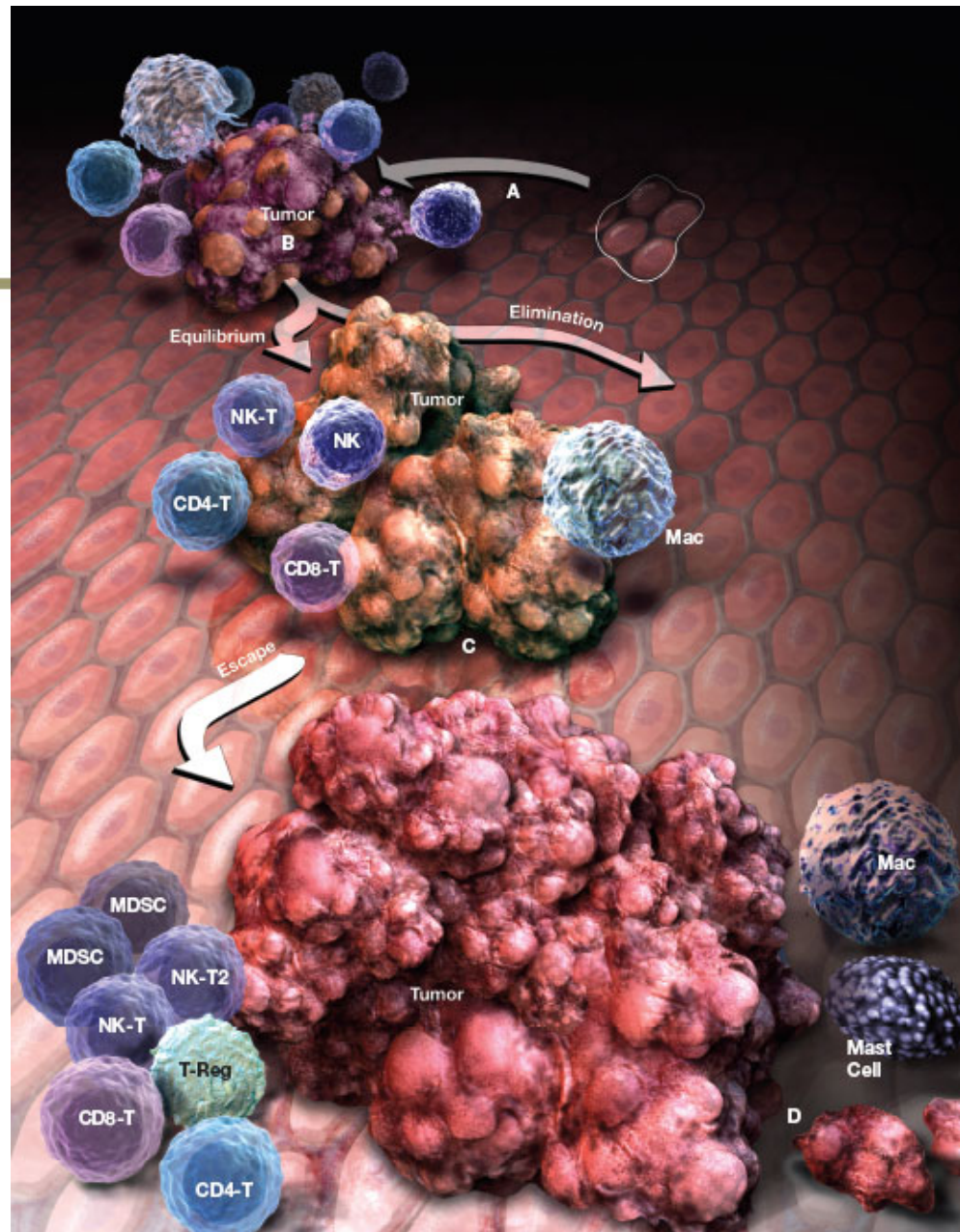
Angiogenesis and Lymphangiogenesis



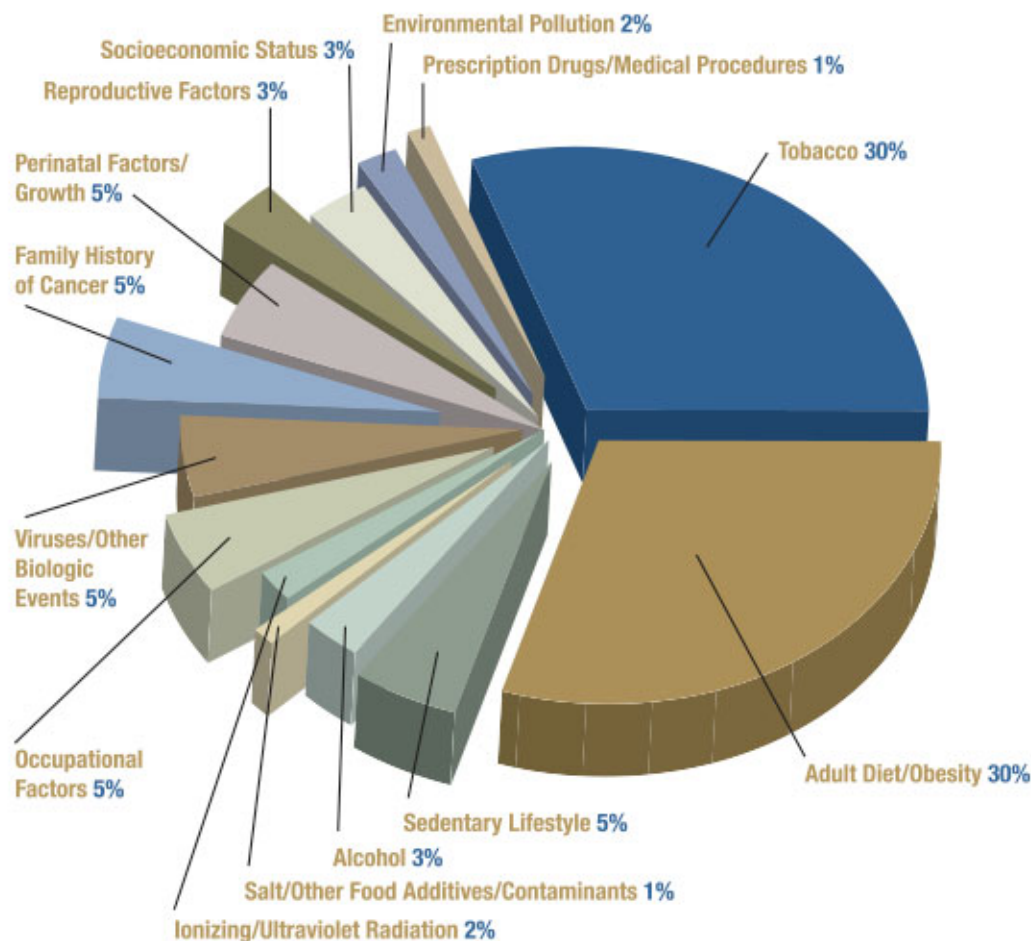
Metastasis



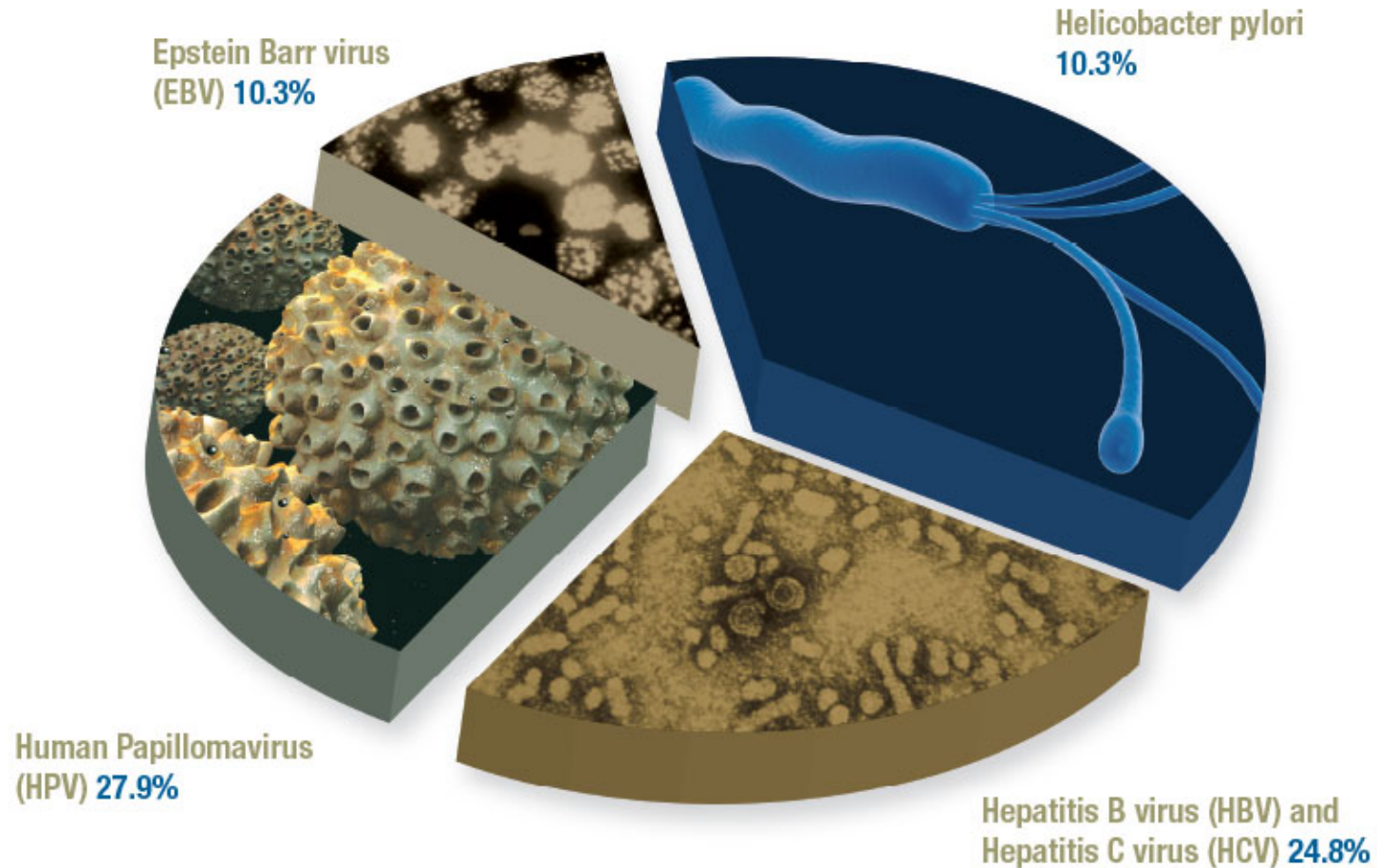
The Role of the Immune System in Cancer



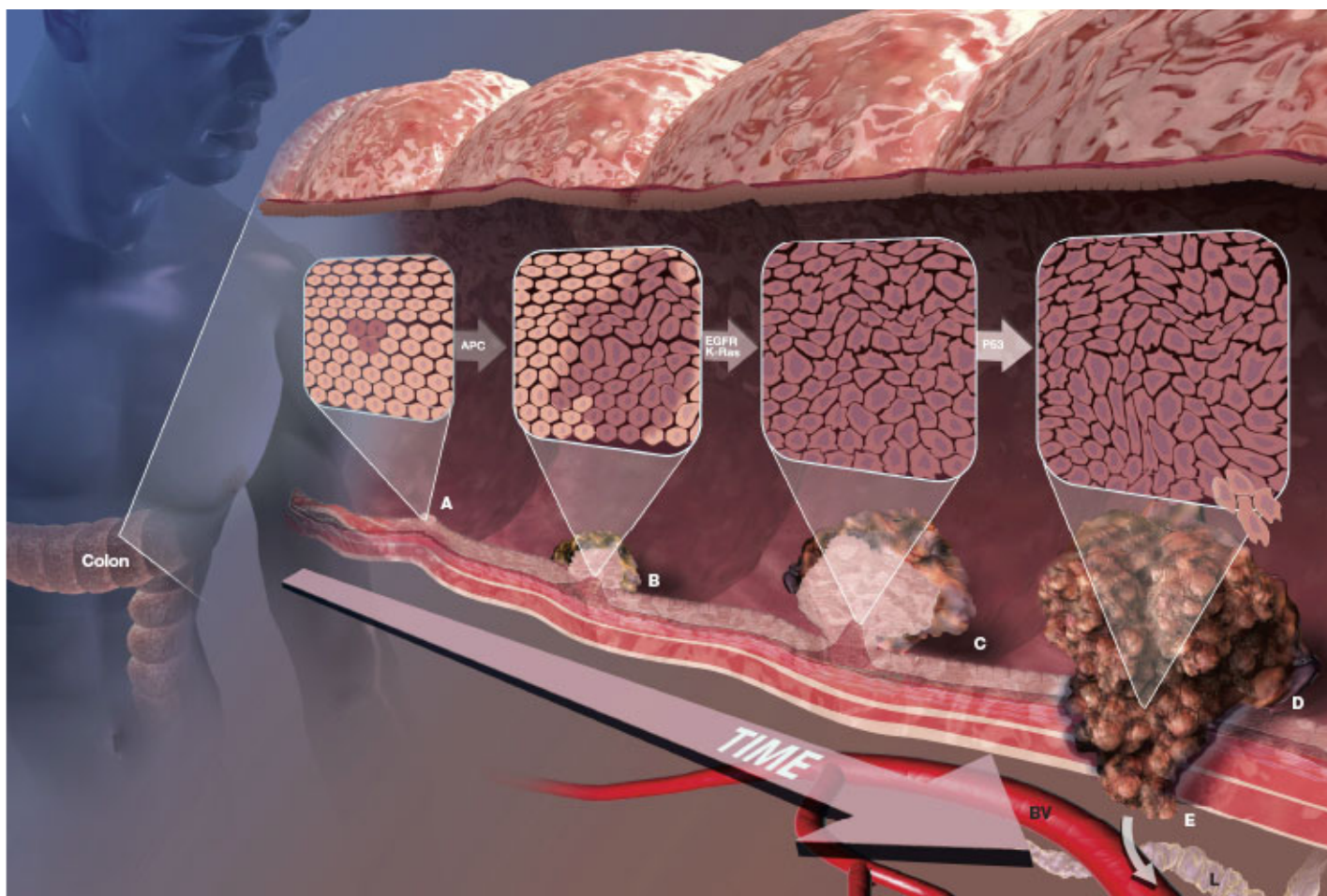
Estimated Percentage of Cancer Deaths Attributable to Established Risk Factors



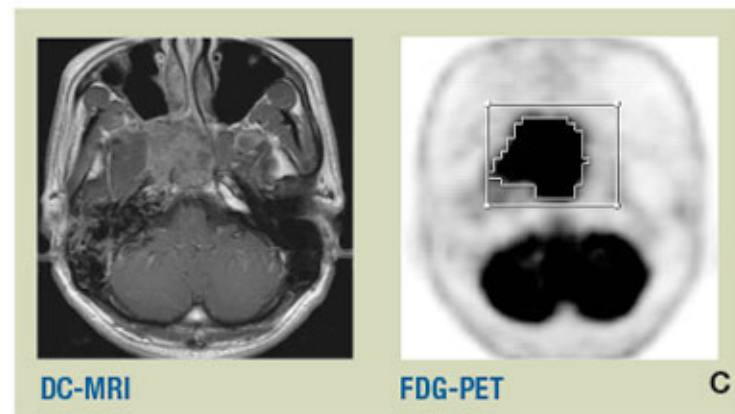
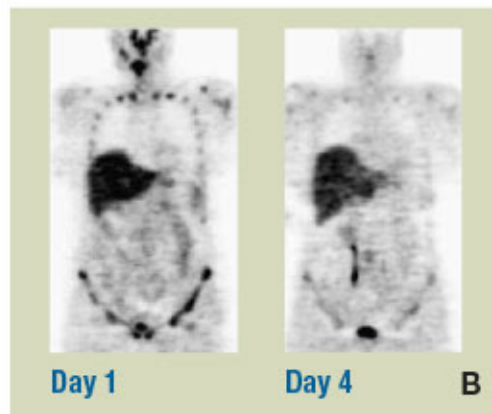
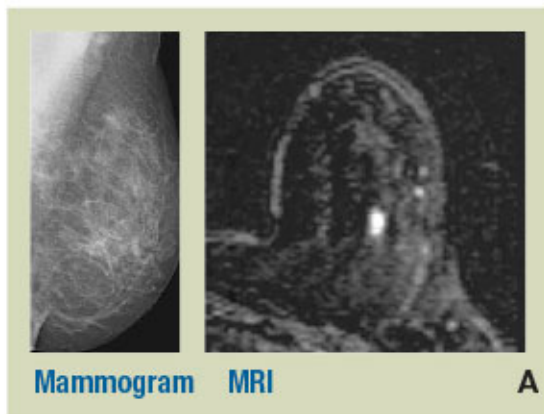
Cancers Due to Five Infections Correspond to 18% of Global Cancer Incidence



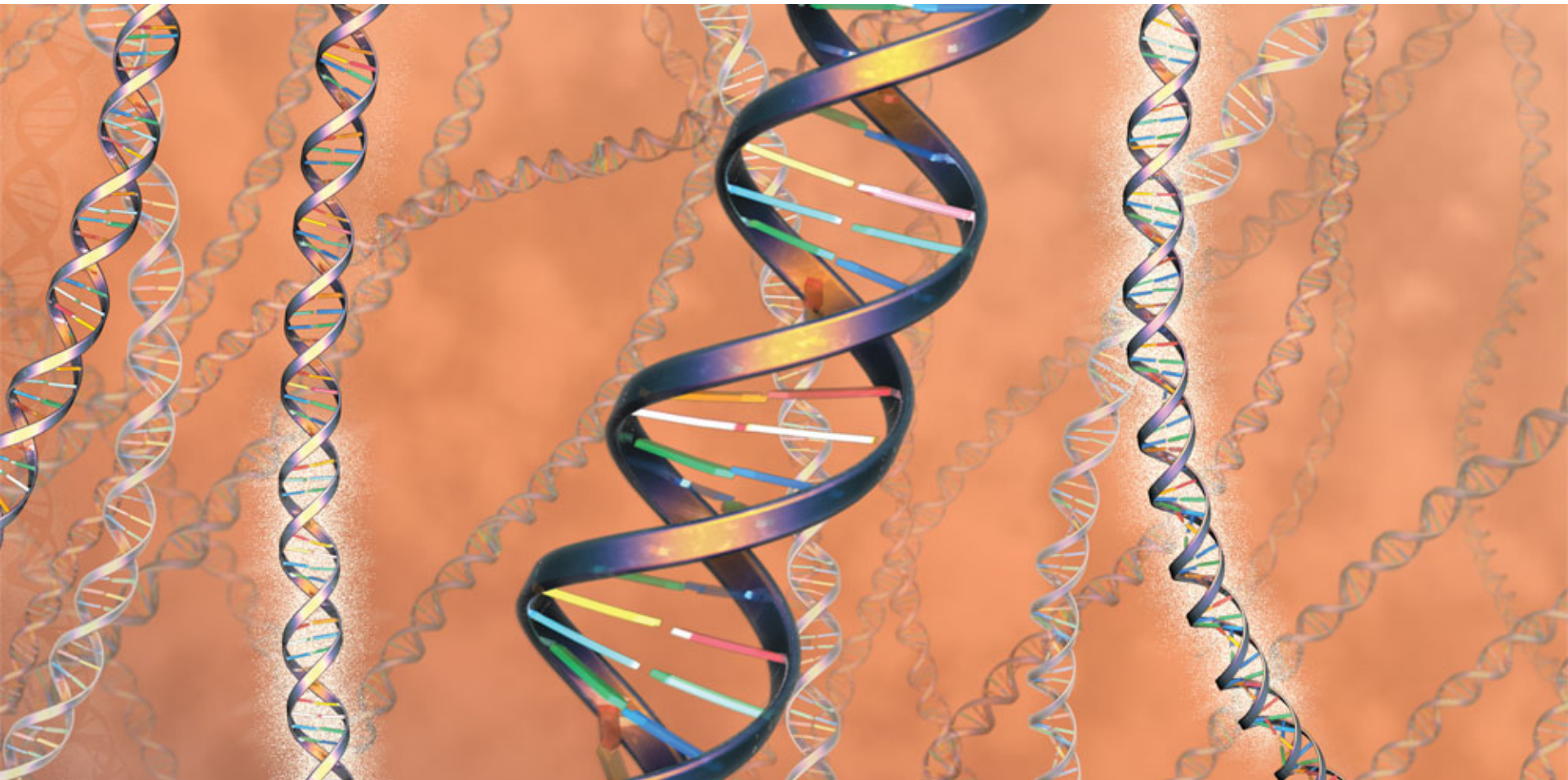
Colorectal Intraepithelial Neoplasia (IEN)



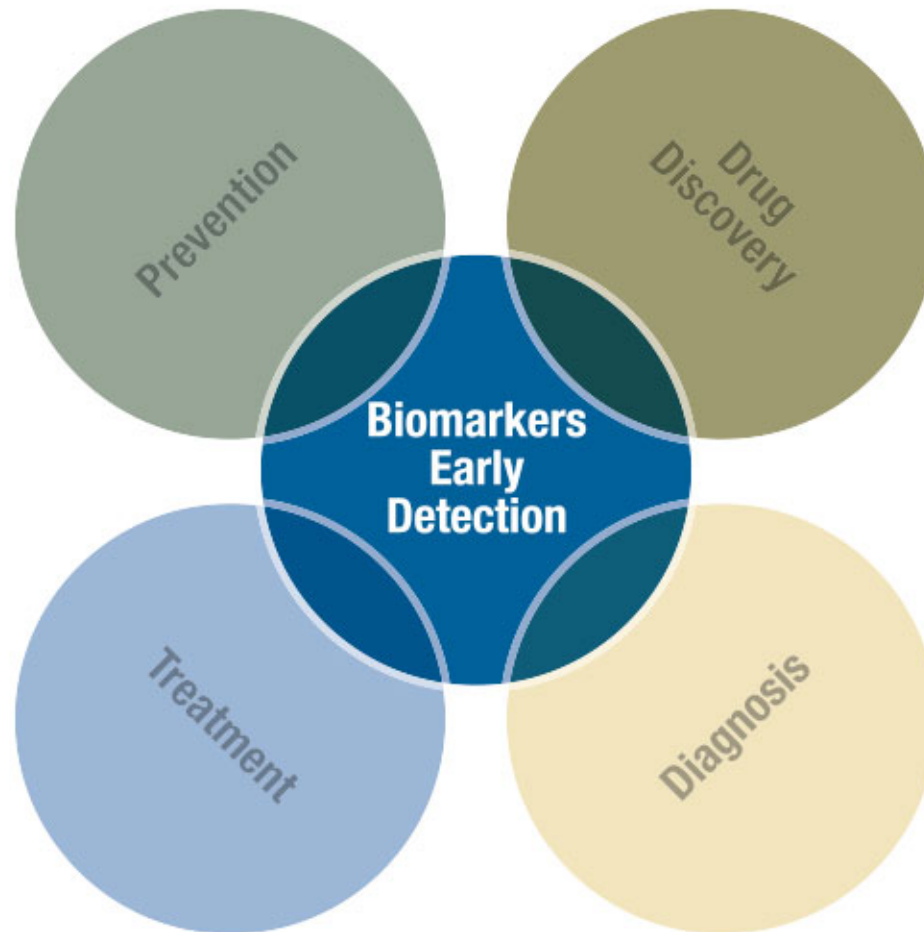
Imaging Modalities for Diagnosis and Imaging Response to Therapy



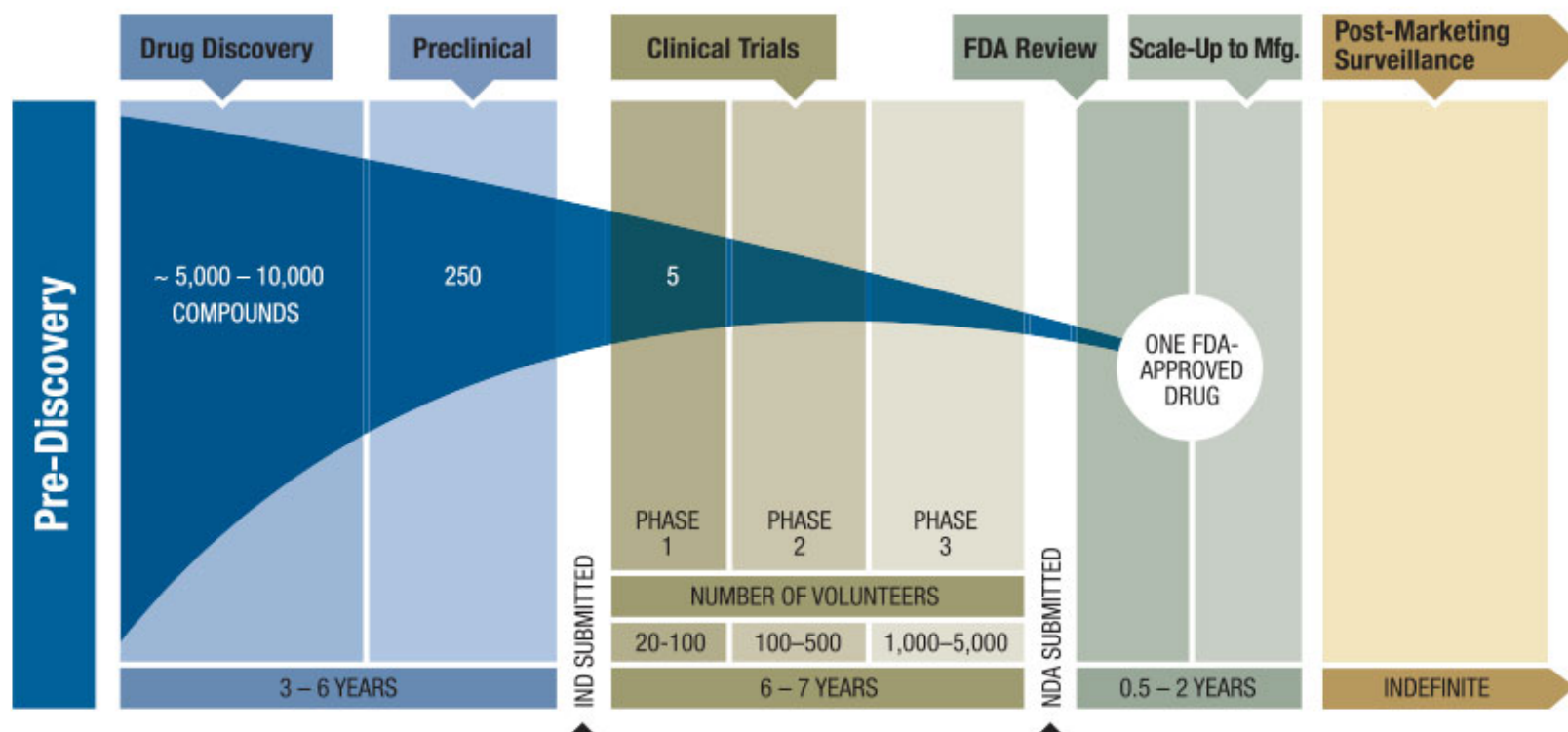
The Cancer Genome Atlas (TCGA)



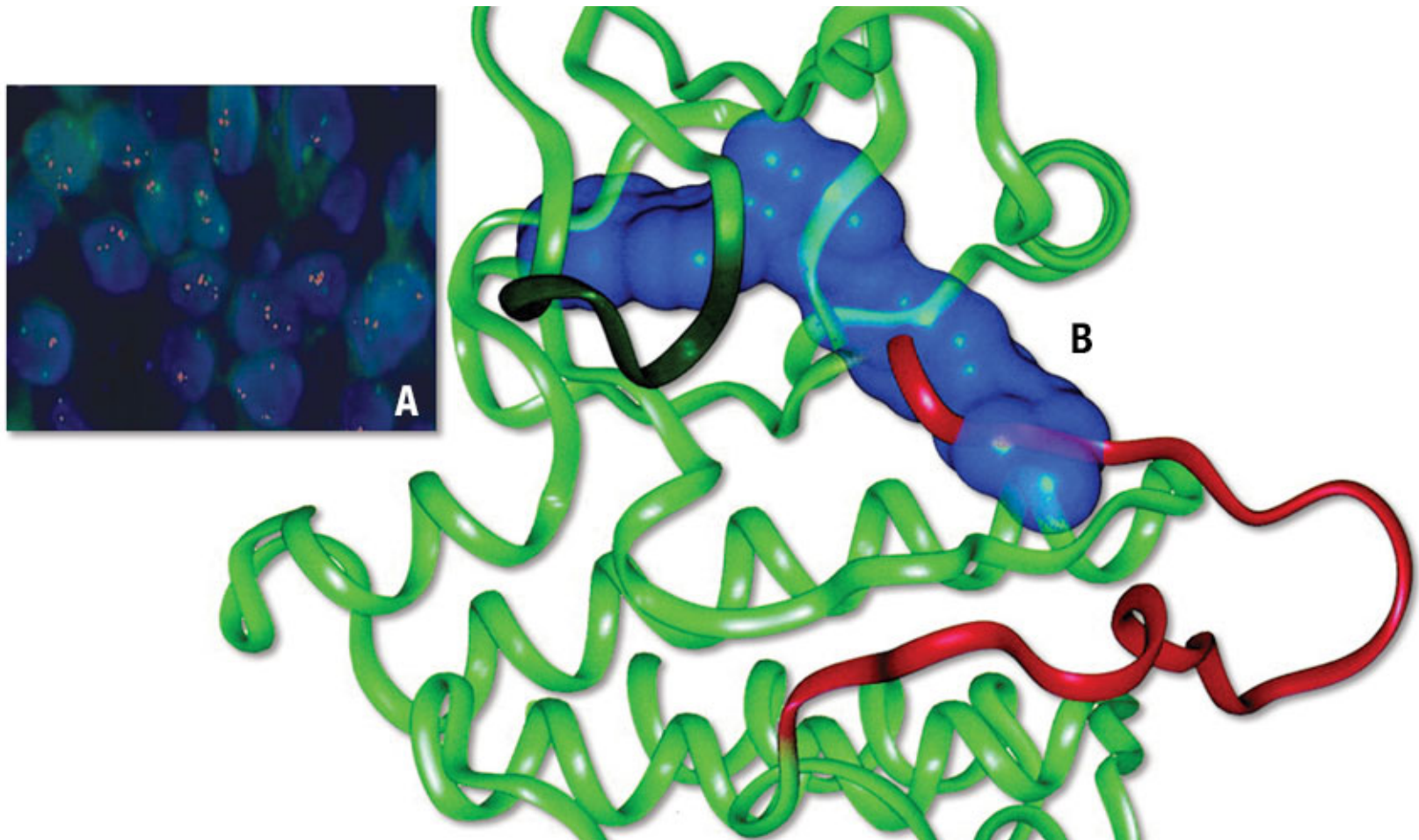
Biomarkers Are the Foundation of Personalized Medicine



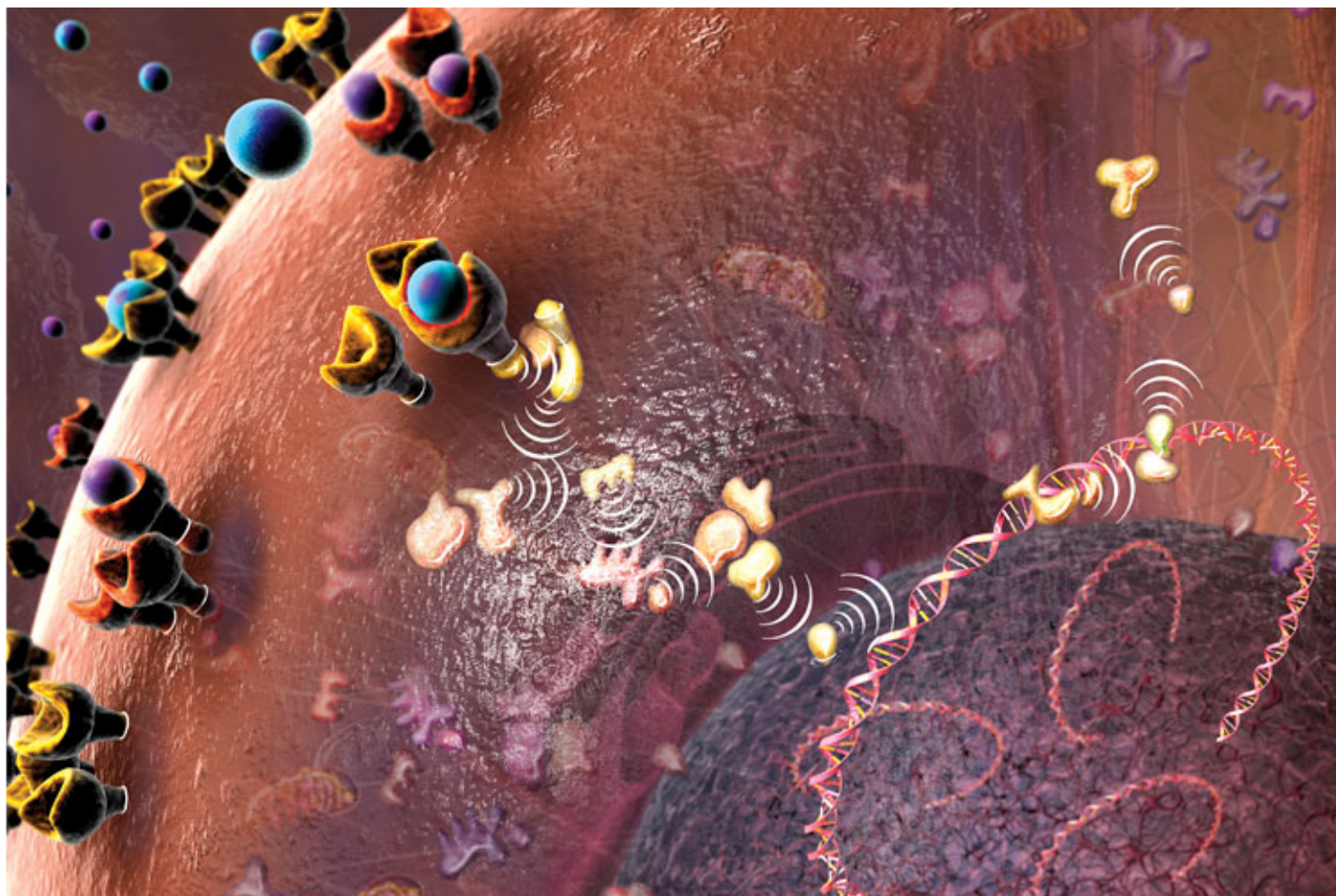
Drug Discovery and Development Timeline



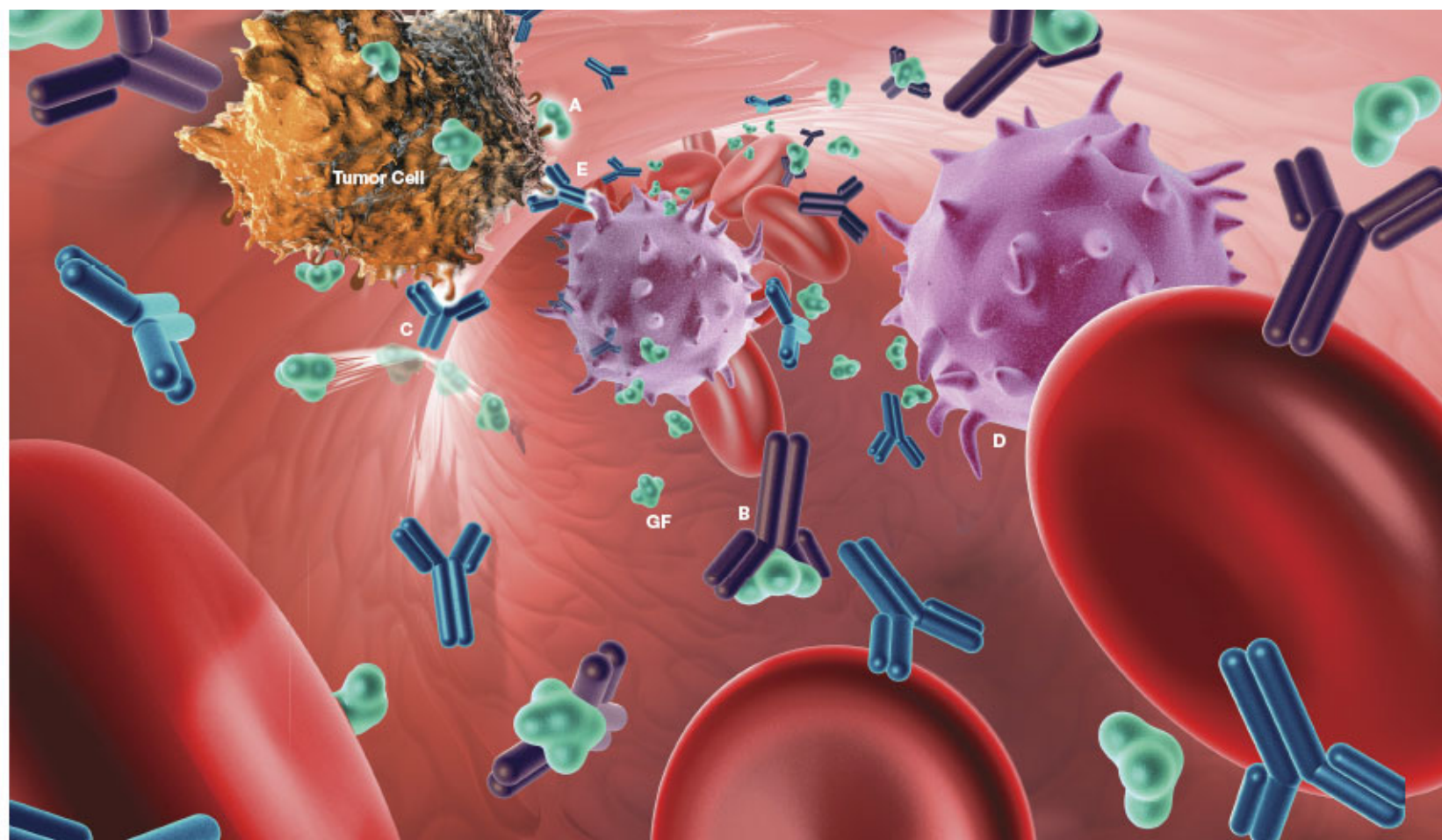
Development of Imatinib (Gleevec)



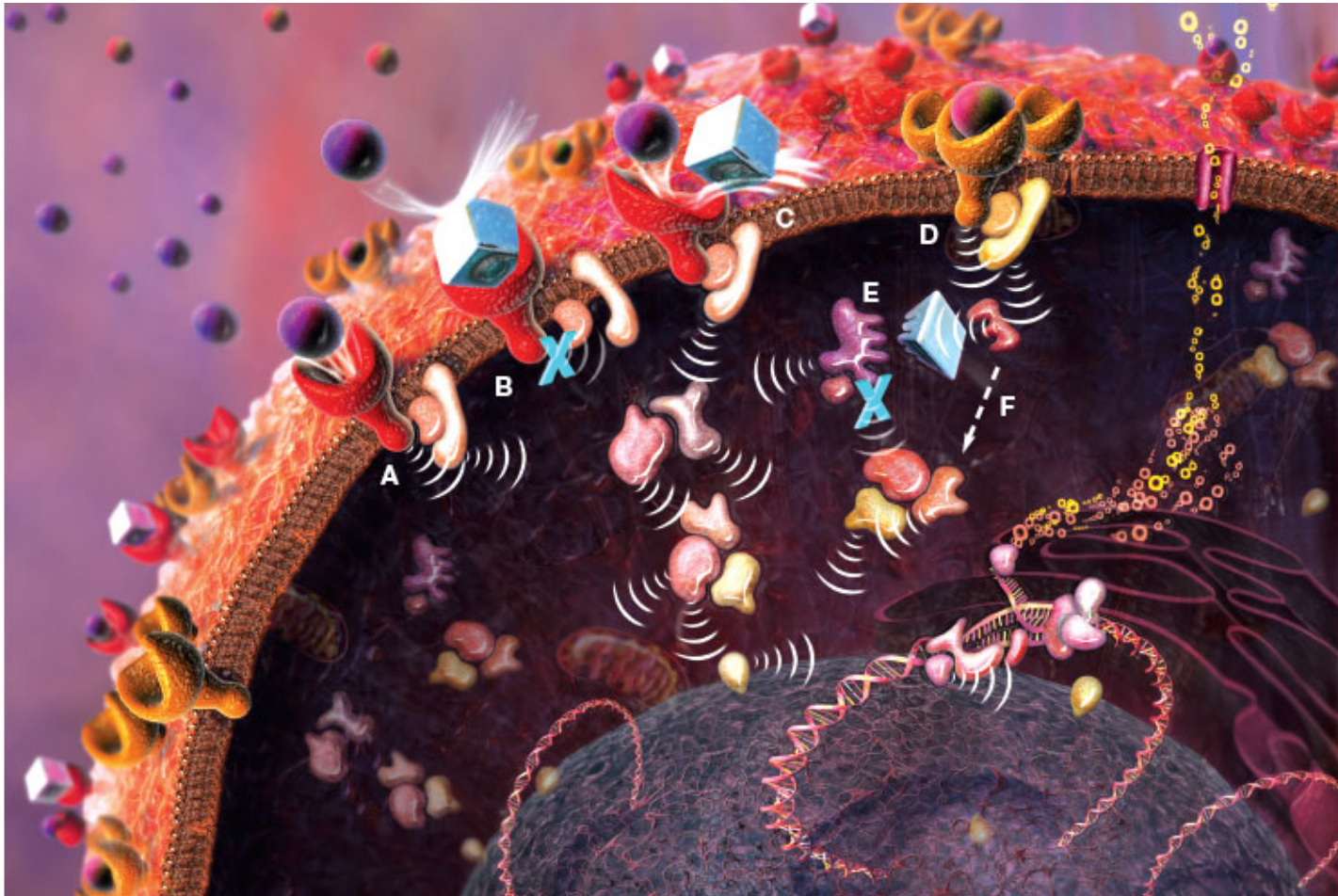
Receptor Tyrosine Kinase Cell Signaling



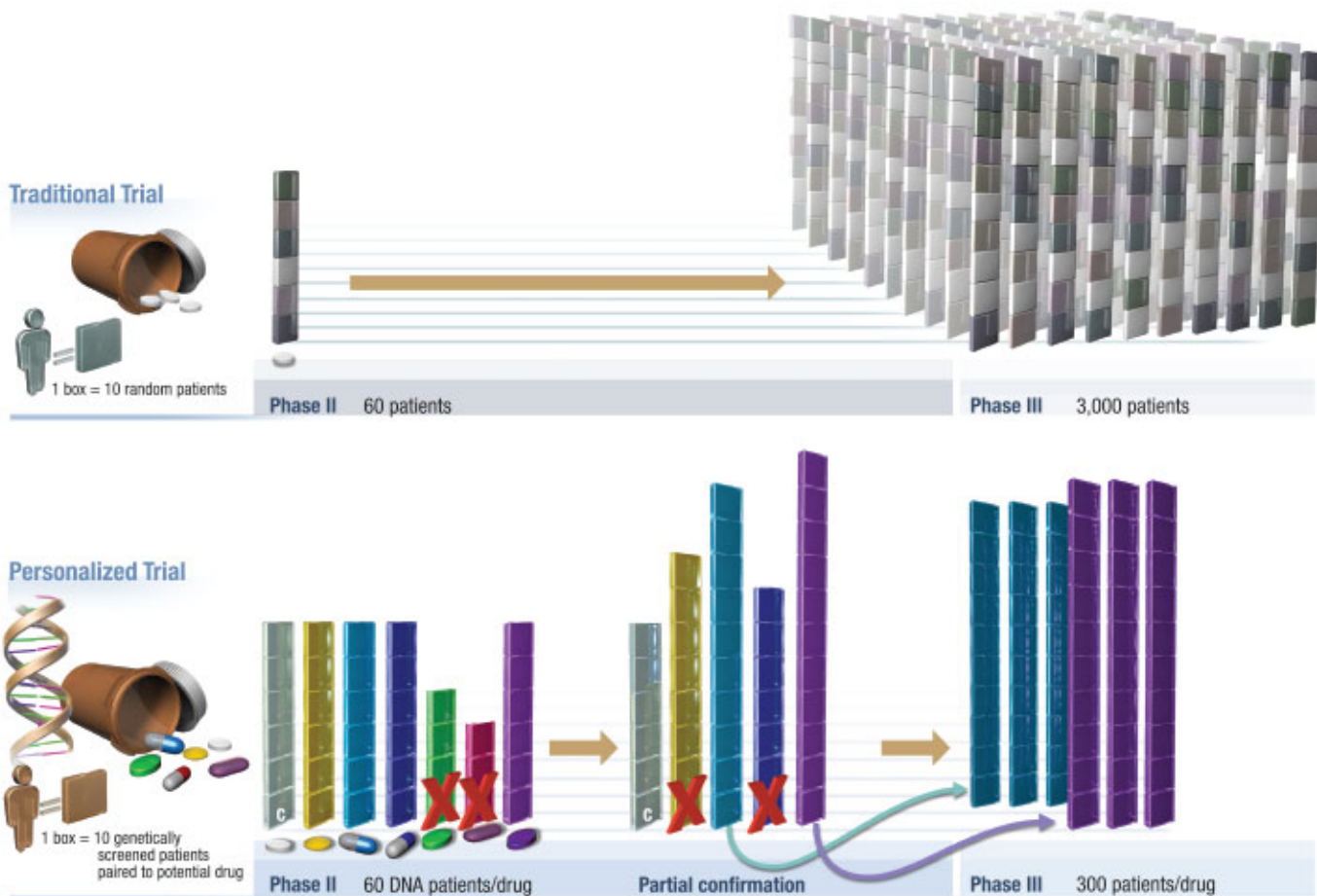
Therapeutic Monoclonal Antibodies



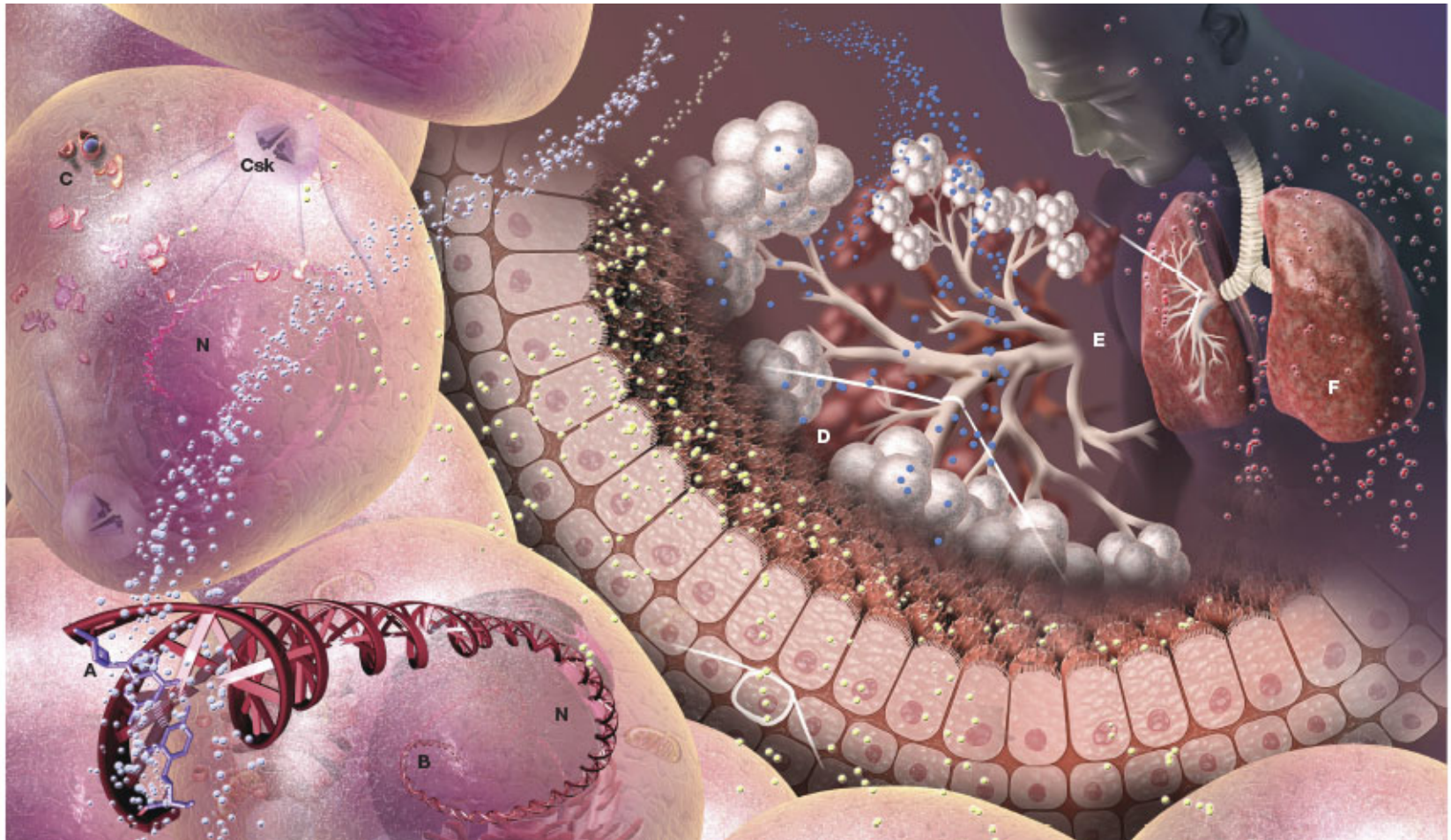
Drug Resistance



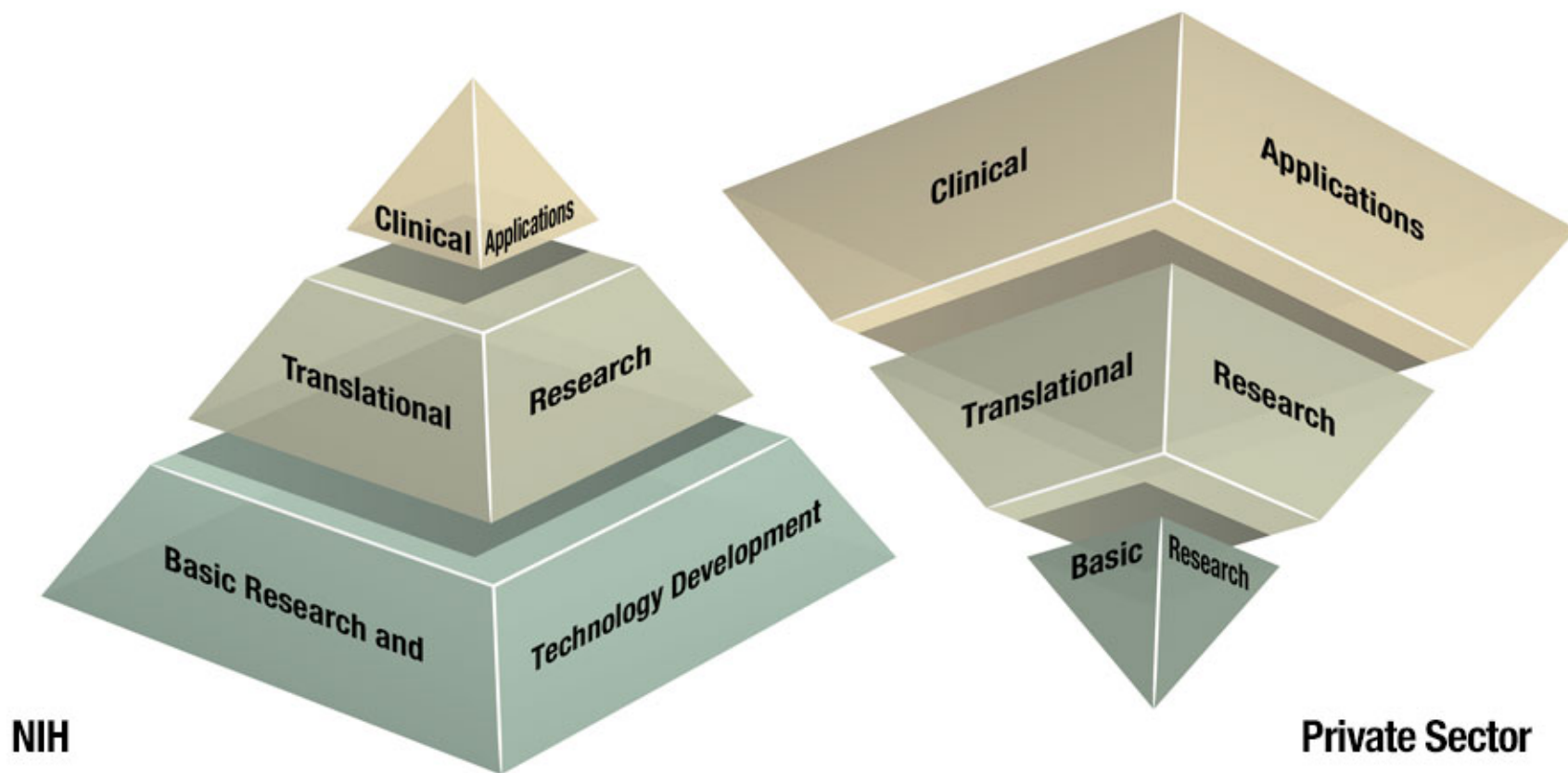
Genetically Informed Clinical Trials



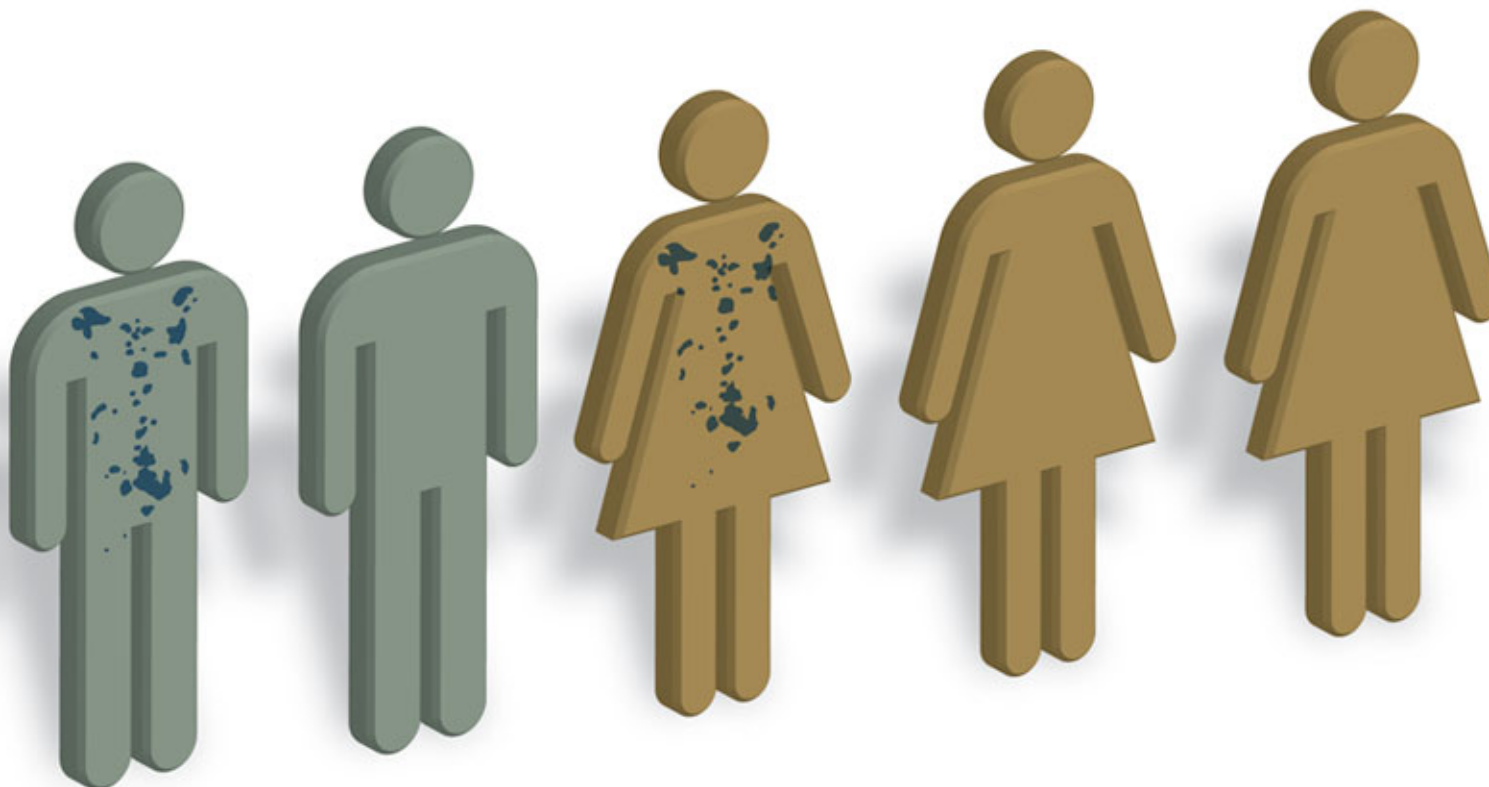
Cancer Occurs and Can Be Treated at Every Scale



The Public and Private Sectors Play Different Roles in Research



Lifetime Cancer Incidence



1 out of 2 men and 1 out of 3 women will be diagnosed with cancer in their lifetimes.

The Costs of Cancer - 2010

THE NATIONAL INSTITUTES OF HEALTH ESTIMATED THE
2010 OVERALL ANNUAL COSTS OF CANCER WERE AS FOLLOWS:

TOTAL COST: **\$263.8 BILLION**

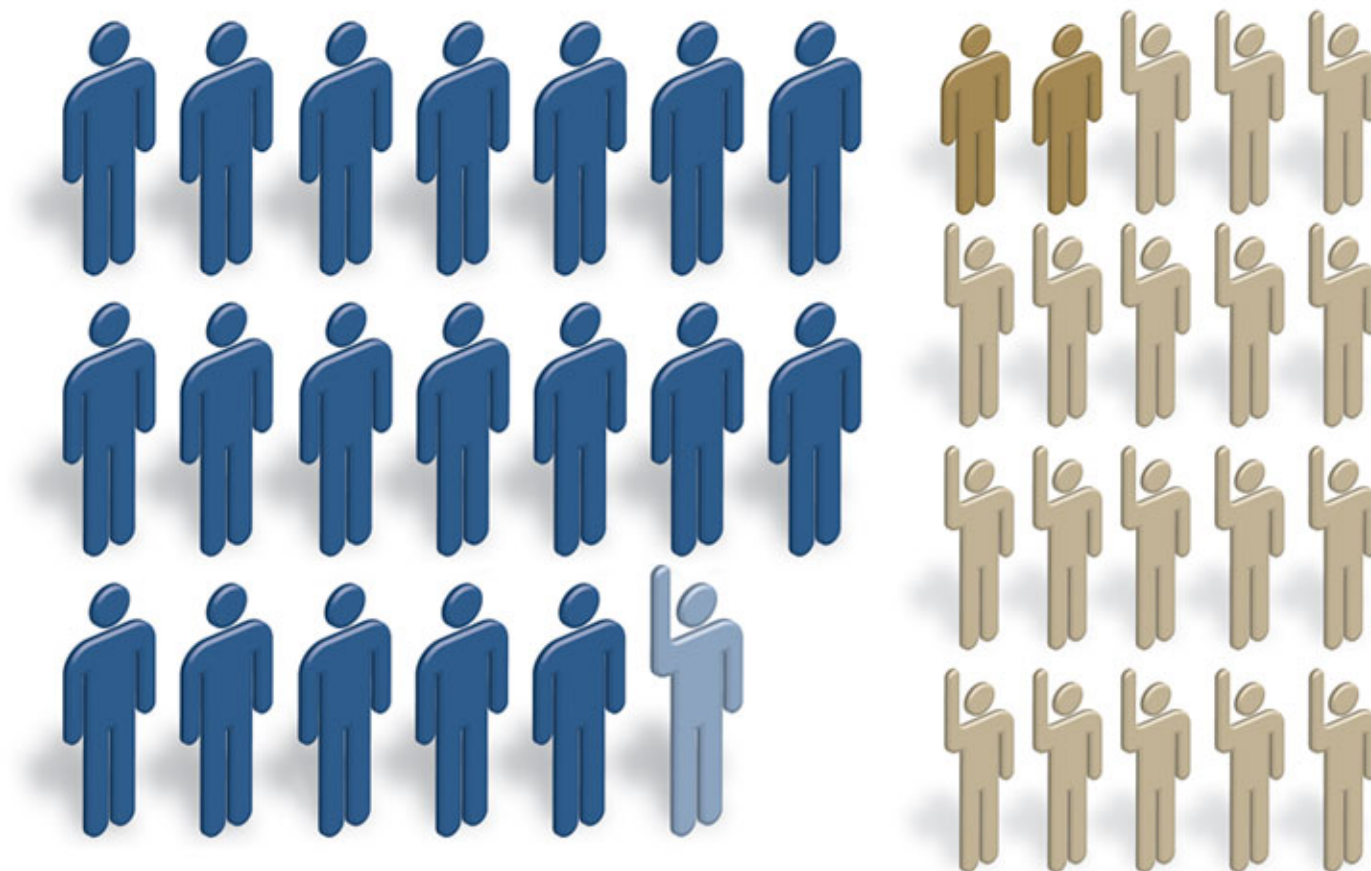
DIRECT MEDICAL COSTS **\$102.8 BILLION**
(TOTAL OF ALL HEALTH EXPENDITURES):

INDIRECT MORBIDITY COSTS **\$20.9 BILLION**
(COST OF LOST PRODUCTIVITY DUE TO ILLNESS):

INDIRECT MORTALITY COSTS **\$140.1 BILLION**
(COST OF LOST PRODUCTIVITY DUE TO PREMATURE DEATH):

SOURCE: ACS

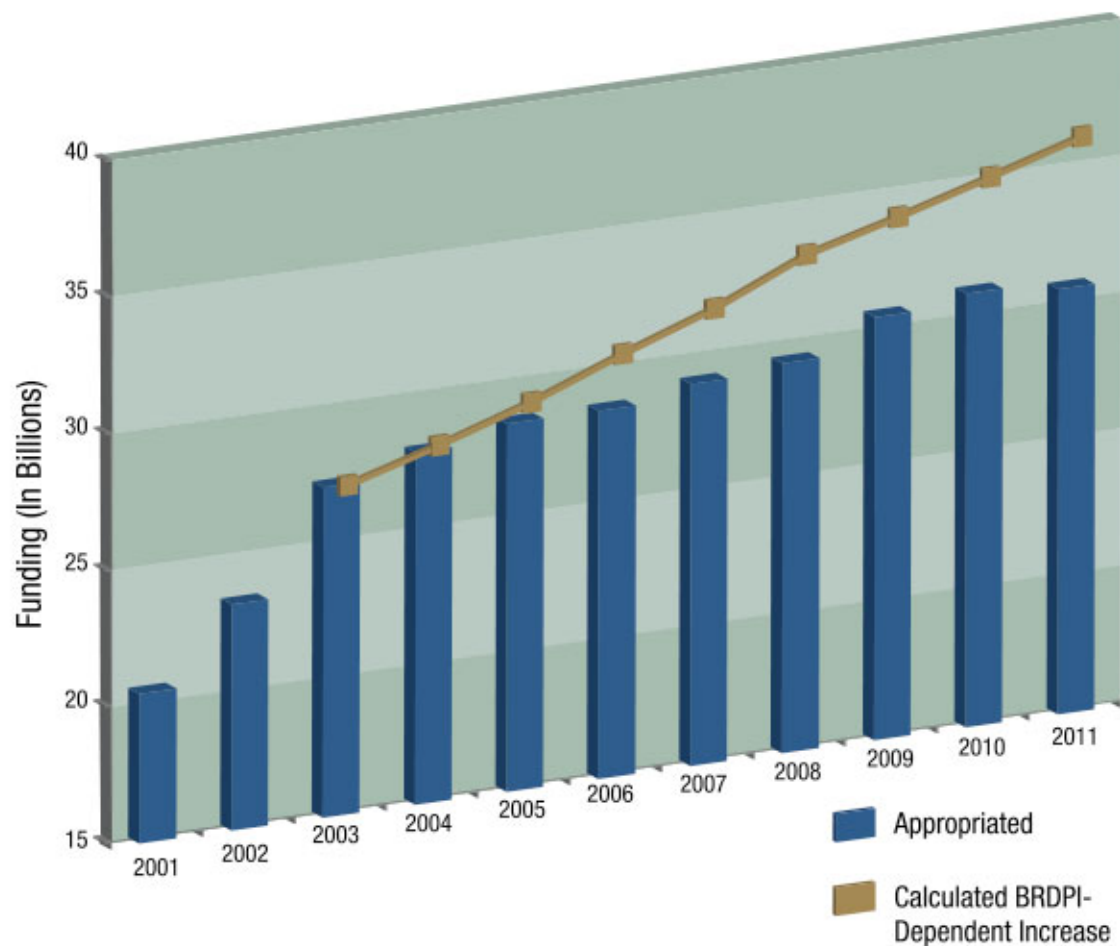
Clinical Trial Participation



Global Collaboration and Multidisciplinary Teams



Biomedical Research and Development Price Index (BRDPI)



National Research and Development Investment (Percent of GDP)

