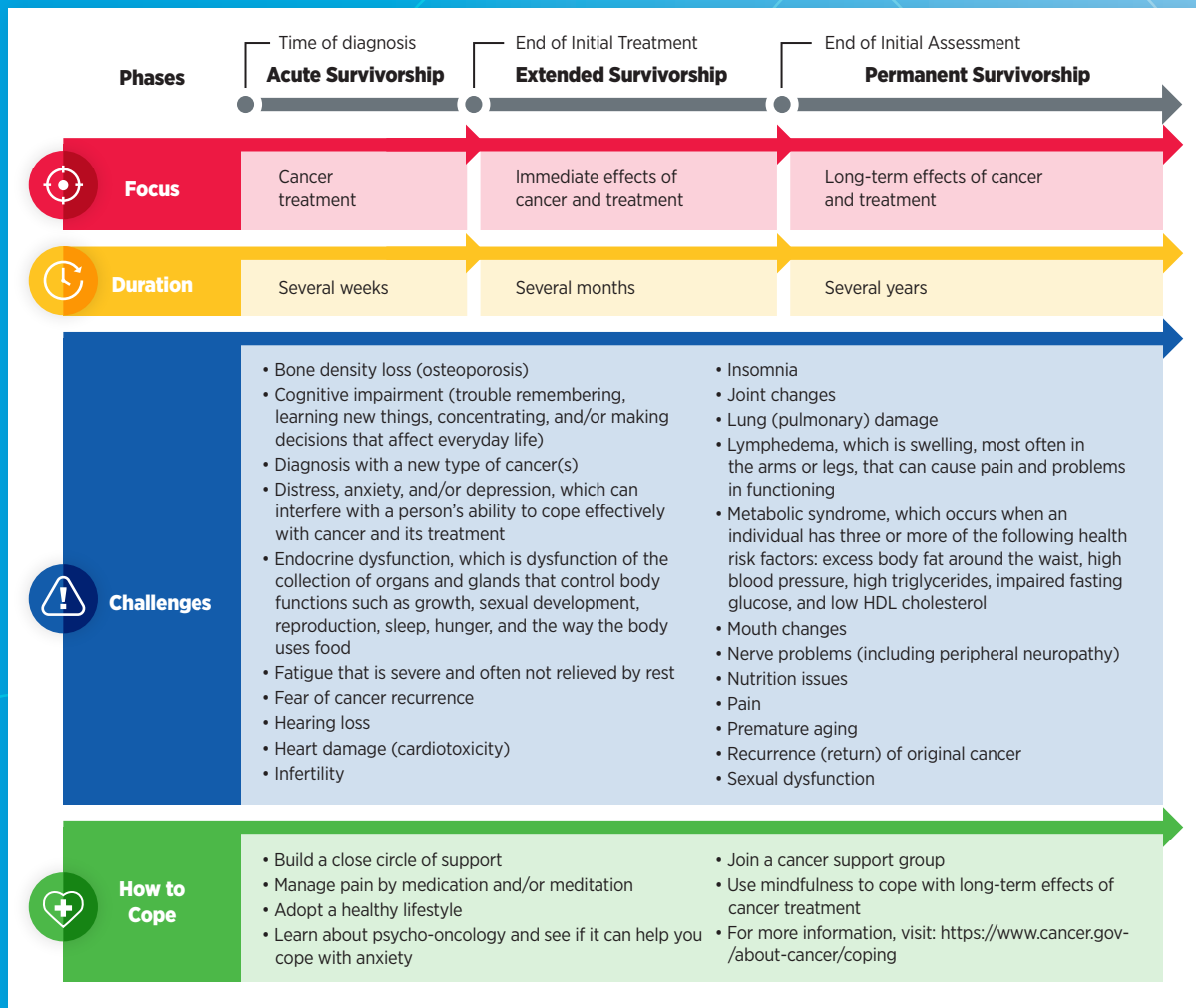


PHASES OF CANCER SURVIVORSHIP



Although all cancer survivors face challenges, survivors of cancer diagnosed during childhood, adolescence, and young adulthood (from ages <1 to 39) are particularly at risk for severe long-term and late effects. The Children's Oncology Group's "Long-Term Follow-Up Guidelines for Survivors of

Childhood, Adolescent, and Young Adult Cancers" were developed to help standardize and enhance the lifelong follow-up care of individuals who were diagnosed with cancer as children, adolescents, or young adults.