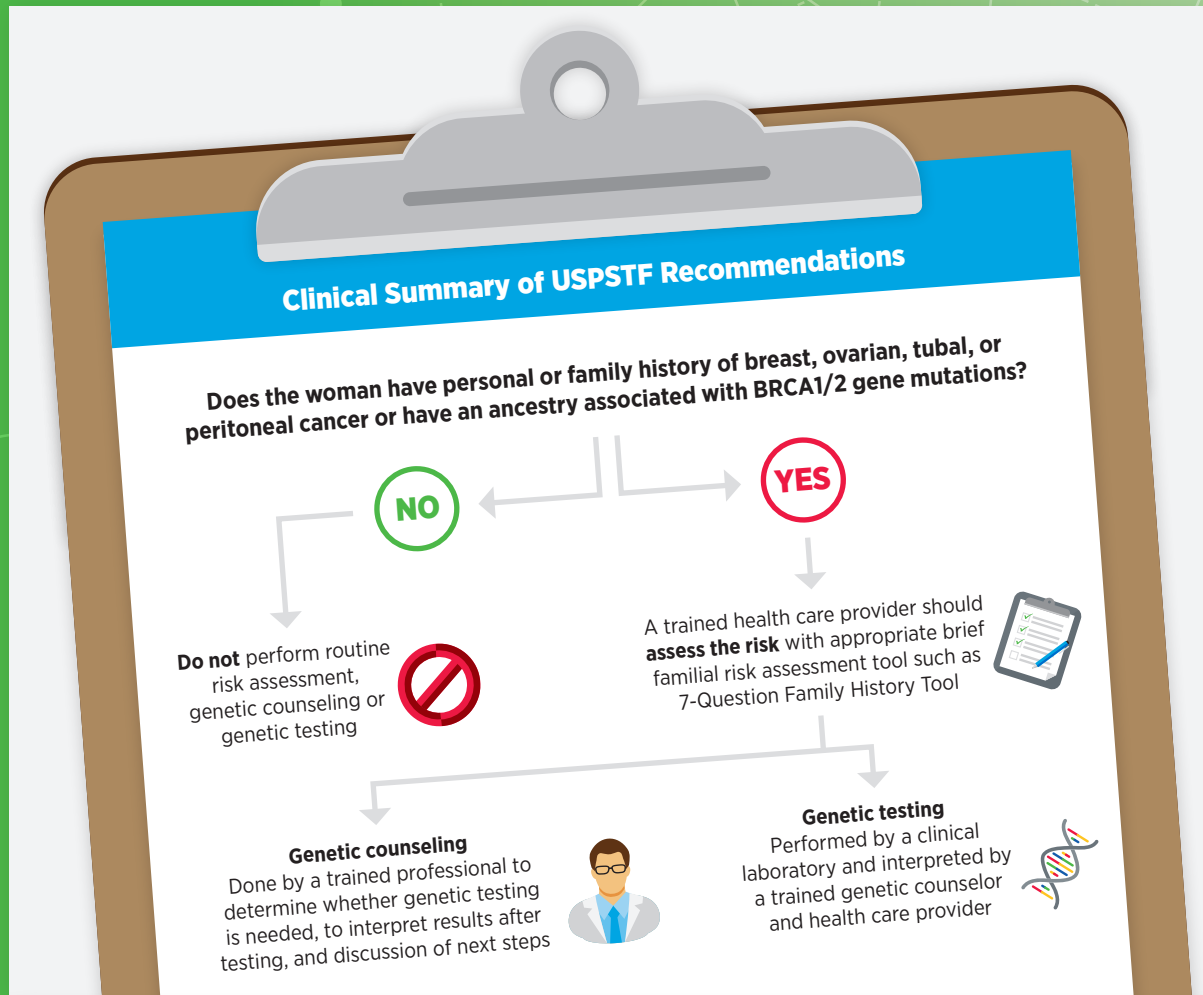


FIGURE 15

THE U.S. PREVENTIVE SERVICES TASK FORCE (USPSTF) RECOMMENDATIONS FOR GENETIC TESTING FOR BREAST CANCER



USPSTF recommends that primary care clinicians assess women with a personal or family history of breast, ovarian, tubal, or peritoneal cancer or who have an ancestry associated with mutations in breast cancer 1 and 2 (BRCA1/2) genes with an appropriate

brief familial risk assessment tool. Women with a positive result on the risk assessment tool should receive genetic counseling and, if indicated after counseling, genetic testing.