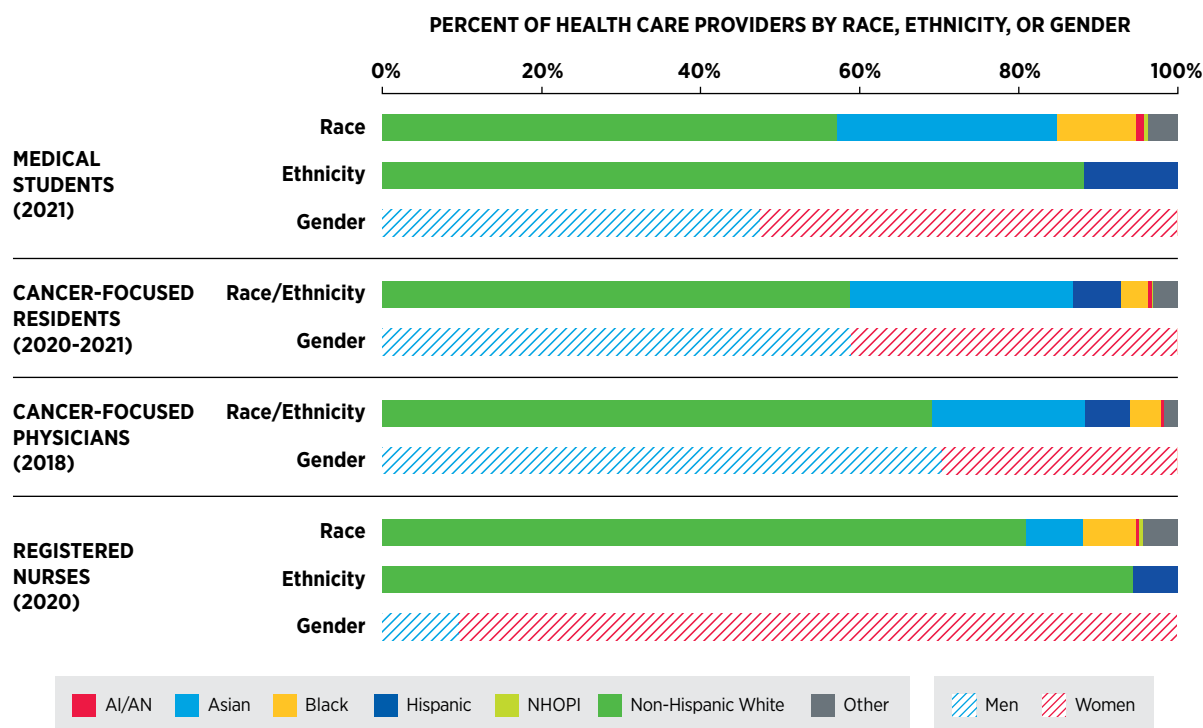


FIGURE 21

Representation in Cancer Care



Bar graphs represent percent of medical students, cancer-related medical residents, cancer-related physicians, and registered nurses who identified as the indicated races, ethnicities, and genders.

Medical student data were compiled from the *Association of American Medical Colleges (AAMC), 2021 Fall Applicant, Matriculant, and Enrollment Data Tables*.

Resident data were compiled from the *AAMC 2021 Report on Residents*, and include residents who self-identified as training in the following specialty categories: Colon and Rectal Surgery, Hematology, Hematology and Oncology, Oncology, Molecular Genetic Pathology, Nuclear Medicine, Gynecologic Oncology, Musculoskeletal Oncology, Cytopathology,

Hematology (Pathology), Pediatric Hematology/Oncology, Radiation Oncology, Independent or Integrated Interventional Radiology, Complex General Surgical Oncology, Thoracic Surgery, Diagnostic Radiology/Nuclear Medicine/Nuclear Radiology, Internal Medicine/Medical Genetics, Pediatrics/Medical Genetics.

Physician data were compiled from the *AAMC Diversity in Medicine: Facts and Figures 2019* report, and include the following specialty categories: Anatomic/Clinical Pathology, General Surgery, Hematology and Oncology, Radiation Oncology, and Radiology.

Registered nurse data were compiled from the *2020 National Nursing Workforce Survey*.