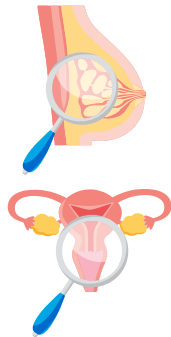
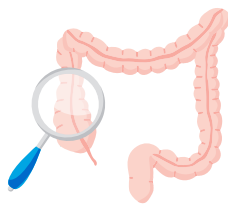


CDC and NCI Cancer Screening Programs



Since its inception in 1991, the CDC's **National Breast and Cervical Cancer Early Detection Program** has helped low-income, uninsured, and underinsured women gain access to screening, diagnostic, and treatment services. In 2017, the program provided breast cancer screening to nearly 286,000 women, diagnosing about 2,500 invasive breast cancers and 765

premalignant lesions before they turned into cancer. The program also provided cervical cancer screening to nearly 139,000 women, diagnosing around 170 invasive cancers and 6,000 premalignant lesions.



The CDC **Colorectal Cancer Control Program** was established in 2015 to increase colorectal cancer screening rates. It currently includes 679 clinics that serve more

than 1 million patients ages 50 to 75, including many uninsured patients. Clinics that have participated since the program's inception have increased screening rates by 10.1 percent.

The NCI **Screen to Save: National Colorectal Cancer Outreach** initiative aims to increase awareness and knowledge about colorectal cancer screening and screening rates among racially and ethnically diverse and rural communities through community health educator-conducted community outreach and education.